

Cleopatra's Fan

Designed by Robert Kaufman & Ramona Rose

www.ramonarose.net

Featuring

Beau Monde 



Finished quilt measures: 82" x 88"

Pattern Level: Advanced Expert

"My skills are sharp, so I'm ready to take on the hard stuff."

ROBERT KAUFMAN
F A B R I C S

Fabric and Supplies Needed

Color	Fabric	Name/SKU	Yardage	Color	Fabric	Name/SKU	Yardage
	A	SRKM-14708-78 PEACOCK	1/2 yard		N	SRKM-14714-2 BLACK	1/2 yard
	B	SRKM-14708-200 VINTAGE	1/2 yard		O	SRKM-14714-9 NAVY	1/2 yard
	C	SRKM-14709-84 CREAM	1/2 yard		P	SRKM-14714-12 GREY	1/2 yard
	D	SRKM-14709-200 VINTAGE	1/2 yard		Q	SRKM-14714-78 PEACOCK	1/2 yard
	E	SRKM-14710-2 BLACK	1/2 yard		R	SRKM-14714-84 CREAM	1/2 yard
	F	SRKM-14710-200 VINTAGE	1/2 yard		S	SRKM-14714-153 SAND	1/2 yard
	G	SRKM-14711-78 PEACOCK	1/2 yard		T	SRKM-14714-186 SILVER	1/2 yard
	H	SRKM-14711-200 VINTAGE	1/2 yard		U	SRKM-14714-200 VINTAGE	1/2 yard
	I	SRKM-14712-2 BLACK	1/2 yard		V	SRKM-14715-2 BLACK	1/2 yard
	J	SRKM-14712-84 CREAM	1/2 yard		W	SRKM-14715-78 PEACOCK	1/2 yard
	K	SRKM-14712-186 SILVER	1/2 yard		X	SRKM-14715-84 CREAM	1/2 yard
	L	SRKM-14713-2 BLACK	1/2 yard		Y	SRKM-14715-133 GOLD	1/2 yard
	M	SRKM-14713-200 VINTAGE	1/2 yard		Z	SRKM-14715-186 SILVER	1/2 yard
					aa	ETJ-9864-15 IVORY	5 yards

You will also need:
 Template Plastic, 1/2 yard Binding
 4-3/8 yards Backing Fabric and Batting

Notes Before You Begin

- Please read through all of the instructions before beginning.
- All of the seam allowances are 1/4" unless otherwise noted.
- Width of fabric (WOF) is equal to at least 42" wide.
- Press all seam allowances open after each seam is sewn, unless otherwise noted.
- Remember to measure twice and cut once!

Printing the Templates

- Print pages 7-9 at 100%. Trace the templates to template plastic and then cut out along (outer) seam allowance line.

Cutting Instructions

Fabrics A-Z

- Fold each fabric in half with selvages together, so you have two layers of fabric. Cut two "bb" Sets and 2 "cc" sets from each fabric, aligning the arrows with the grain of fabric (because you are cutting through two layers, you are cutting paired mirror images).
- Cut eight more sets of "bb" and eight more of "cc" from your sixteen favorite prints.

Fabric aa

- Fold in half with selvages together. Cut sixty of all the "aa" templates aligning the arrows with the grain of the fabric.

Assembly Instructions

Each block is made up of three different fabrics: the background (fabric aa) and two prints chosen from Fabrics A-Z. These two prints will be referred to as "bb" and "cc" on the templates and illos.

Step 1: Assemble the Blocks

- Pair up the fabrics into block sets. You may follow the fabric layout of the sample quilt, or pair the fabrics to your own liking. You will need one set of background pieces, one set of bb pieces and one set of cc pieces for each block.
- Lay the pieces out using fig 1 as a reference before you begin sewing.

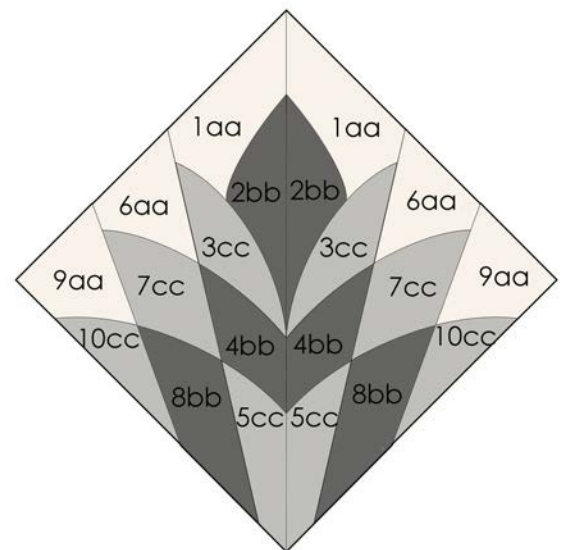


fig. 1

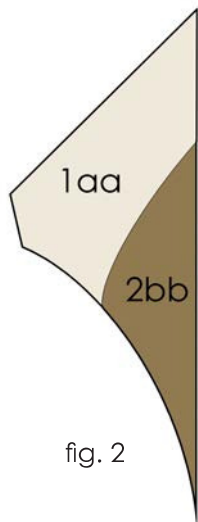


fig. 2

- Sew piece 1 to piece 2 (fig. 2).
- Next, sew piece 3 to pieces 1 & 2, then sew 4 & 5 to piece 3 in numerical order to create column 1 (fig. 3).

Always press the seam allowances toward the larger numbered piece (ie, the seam between 1 and 2 goes toward the 2.). The column seams are pressed toward the 9-10 column, and the center block seam is pressed open.

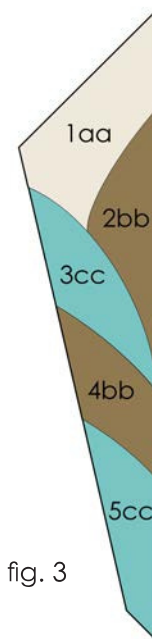


fig. 3

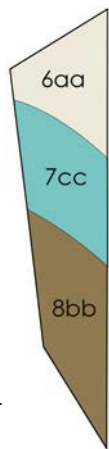


fig. 4

- Sew pieces 6, 7 and 8 together as pictured in fig. 4, to make column 2.

- Sew piece 9 to 10 to create column 3 (fig. 5).

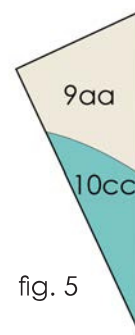


fig. 5

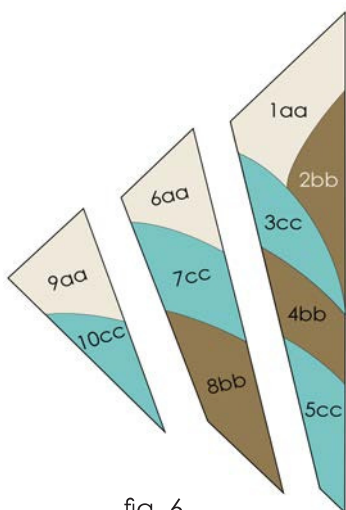


fig. 6

- Sew Column 1, 2 & 3 together to make a half block.
- Repeat the steps on the remaining pieces to make the second half of the block.
- Sew the two halves together and press the seam allowance open to complete the block.

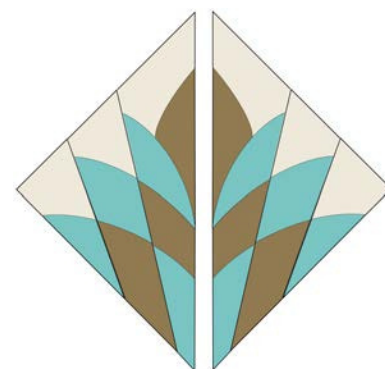


fig. 7

- Repeat Step 1 with the remaining block sets to make fifty-four whole blocks and twelve half blocks.

Step 2: Assemble the Quilt

- Arrange your blocks into diagonal rows according to fig. 8.
- Sew the blocks together to make rows and press seam allowances open.



fig. 8

- Sew the rows together, making sure to match the seams according to fig. 9. Press the seam allowances open.

fig. 9

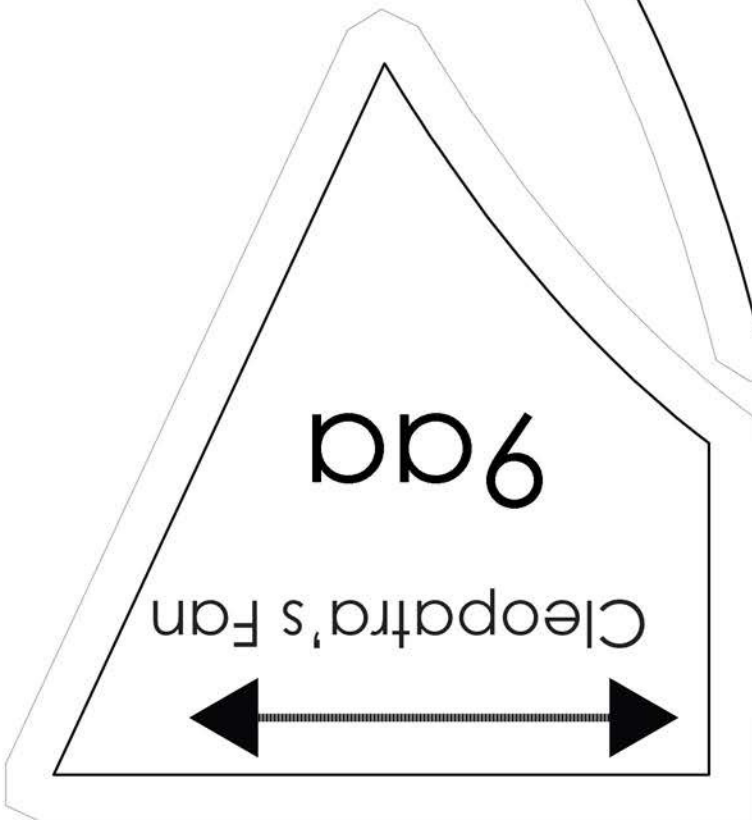


- Trim the top and bottom of the quilt top to true up and you are finished!

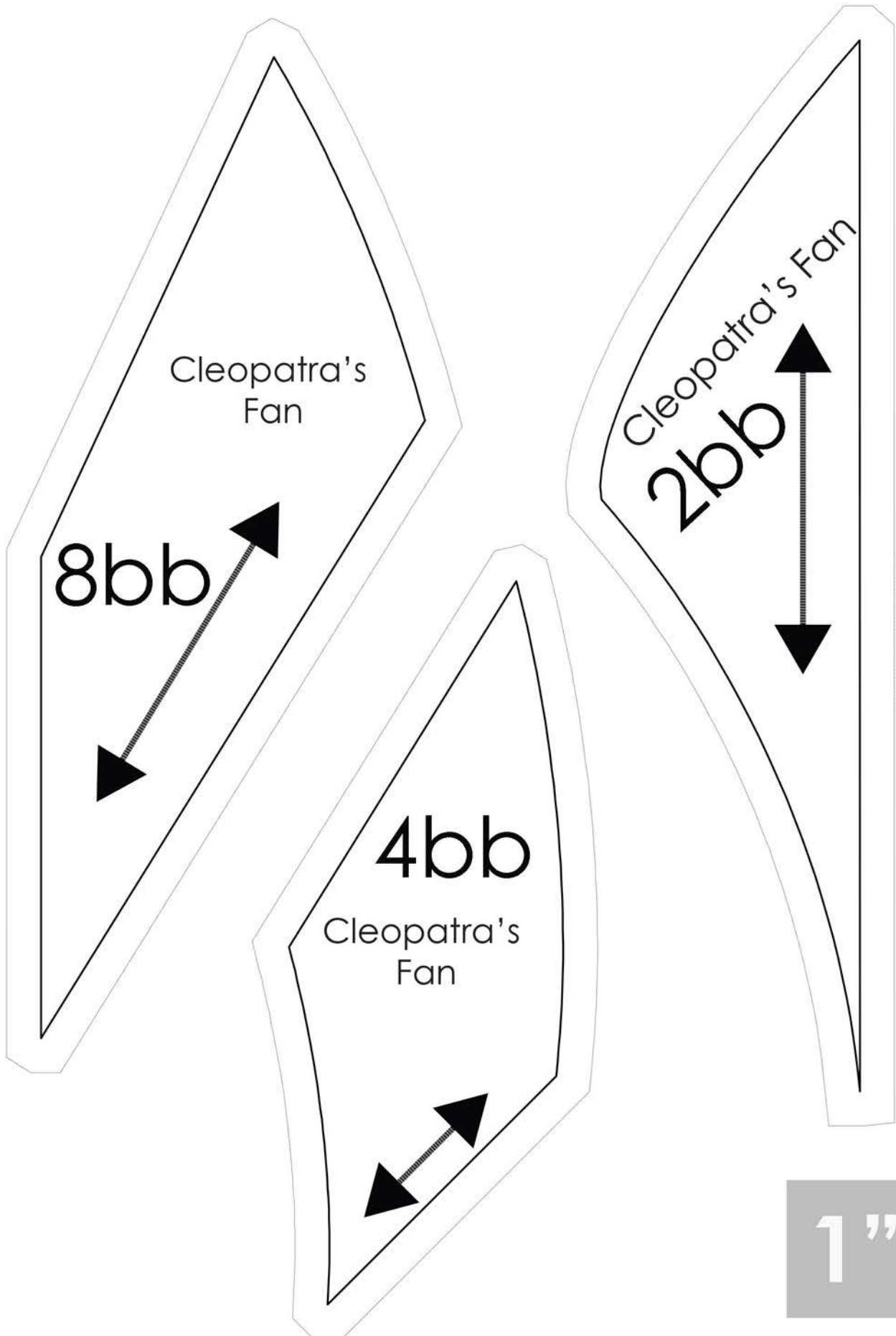
Baste, quilt, bind and enjoy.

fig. 10

Cleopatra's Fan "aa" Templates



Cleopatra's Fan "bb" Templates



Cleopatra's Fan "cc" Templates

